

**C-ENERGY™  
ACTILION GHDR  
GRAPHITE ACTIVE  
MATERIALS FOR  
BEV / CE / ESS MARKETS**

---

**YOUR SOLUTION  
FOR HIGH ENERGY DENSITY**

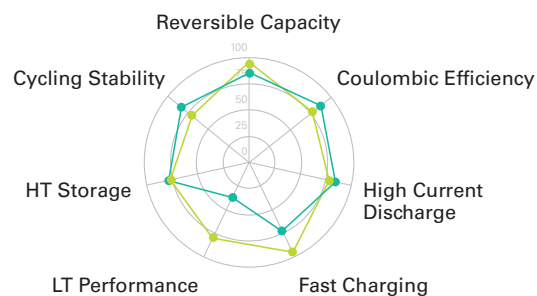
---

Imerys Graphite & Carbon C-ENERGY™ Actilion GHDR active materials are a solution specifically developed for applications requiring high energy density and are ideal for use in cylindrical and prismatic cells.

## ACTIVE MATERIALS FOR CYLINDRICAL AND PRISMATIC LITHIUM-ION CELLS

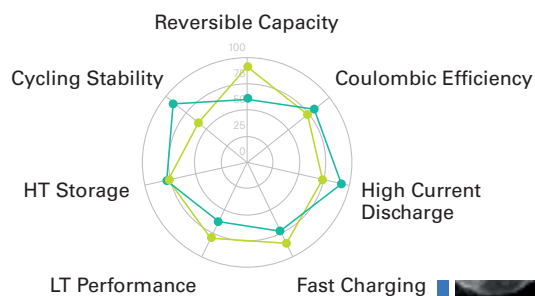
### C-ENERGY™ ACTILION GHDR 15-4:

- ✔ High reversible capacity
- ✔ Excellent low temperature performance

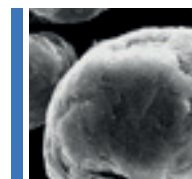


### C-ENERGY™ ACTILION GHDR 10-4:

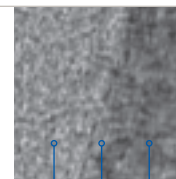
- ✔ Excellent performance in power tool batteries



— C-ENERGY™ products — Market benchmark



SEM image of GHDR



Carbon Layer Interface Graphite

### CHARACTERISTICS

- ✔ Proprietary Surface Coating which enables significantly improved performance in Li-ion batteries

### KEY BENEFITS INCLUDE

- ✔ Environmentally friendly
- ✔ Low resistance
- ✔ Lower temperature properties improvement
- ✔ High capacity
- ✔ High efficiency
- ✔ Improved safety

### C-ENERGY™ ACTILION GHDR OVERVIEW

PRODUCT		GHDR 15-4	GHDR 10-4
BET	m <sup>2</sup> /g	4.1	4.7
PSD/M	D10	13	8
	D50	17	12
	D90	23	18
TAP DENSITY	g/cm <sup>3</sup>	1.1	1.1
CAPACITY	mAh/g	364	361
1ST EFFICIENCY	%	93.0	89.2
APPLICATION		BEV / ESS / High Energy	Power tool / HEV / High power
CELL FORM FACTOR		Cylindrical / Prismatic	Cylindrical / Prismatic

The information contained herein is believed to be correct. However, no warranty is made, either expressed or implied regarding the accuracy or the results to be obtained from the use of such information. The user assumes all risk and liability for intellectual property infringement and no statement(s) made in relation to this material is intended or shall be construed as inducing infringement of a valid patent.